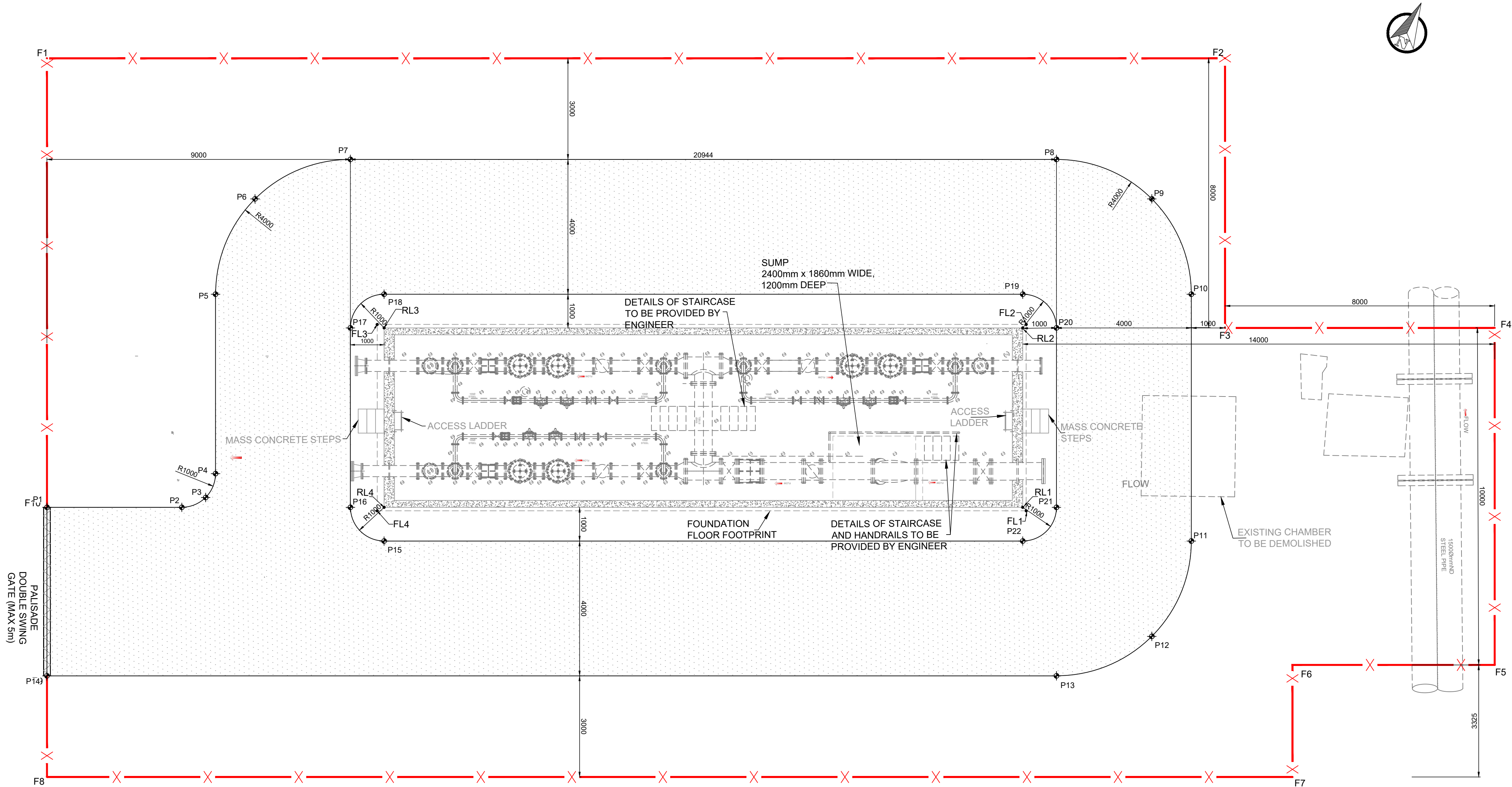


GENERAL NOTES:

- ALL FITTINGS TO BE LINED WITH 600 MICRONS OF SOLVENT FREE FUSION BONDED EPOXY INTERNALLY & EXTERNALLY.
- ALL FLANGES TO BE DRILLED TO TABLE 2500/3 OF SANS 1123.
- CHAMBER DIMENSION AND DEPTH ARE SUBJECT TO CHANGE UPON CONFIRMATION OF THE EXISTING PIPE LOCATION AND DEPTH.
- FITTINGS ARE SUBJECT TO CHANGE UPON CONFIRMATION OF EXISTING PIPE MATERIALS.
- EVERY CHAMBER MUST HAVE A 100mm DIAMETER VENT PIPE WITH MOSQUITO GAUZE.
- ROOF SLAB TO BE MADE OF PRECAST PANELS.
- CONTRACTOR TO CONFIRM LOCATION OF ALL SERVICES AND DIMENSIONS OF FITTINGS PRIOR TO COMMENCEMENT OF MANUFACTURE. FINALS LEVELS TO BE CONFIRMED ON SITE PRIOR TO CONSTRUCTION.
- ALL BURIED FLANGE CONNECTIONS SHALL BE WRAPPED WITH PETROLATUM MASTIC AND uPVC WRAPPING.



SETTING OUT COORDINATES FENCE CORNER		
POINT	Y COORD	X COORD
F1	88928.943	2888326.799
F2	88897.478	2888311.707
F3	88893.955	2888318.877
F4	88886.754	2888315.432
F5	88882.749	2888324.362
F6	88888.015	2888327.004
F7	88886.457	2888330.042
F8	88919.689	2888345.989
F9	88921.107	2888343.289
F10	88923.147	2888338.793

CHAMBER CORNER COORDINATES			
LABLE	X	Y	DESCRIPTION
RL1	88897.003	2888326.282	ROOF
RL2	88899.303	2888321.480	ROOF
RL3	88916.389	2888329.662	ROOF
RL4	88914.089	2888334.465	ROOF
FL1	88896.867	2888326.330	FOUNDATION
FL2	88899.255	2888321.343	FOUNDATION
FL3	88916.618	2888329.659	FOUNDATION
FL4	88914.229	2888334.645	FOUNDATION

SETTING OUT COORDINATES WGS84 ACCESS ROAD		
POINT	Y COORD	X COORD
P1	88923.108	2888338.784
P2	88919.500	2888337.057
P3	88918.989	2888336.487
P4	88919.030	2888335.723
P5	88921.330	2888330.920
P6	88921.495	2888327.863
P7	88919.450	2888325.585
P8	88900.561	2888316.538
P9	88897.504	2888316.373
P10	88895.225	2888318.418
P11	88892.062	2888325.024
P12	88891.897	2888328.081
P13	88893.941	2888330.360
P14	88920.948	2888343.294
P15	88913.657	2888335.367
P16	88914.991	2888334.897
P17	88917.291	2888330.094
P18	88916.821	2888328.761
P19	88899.735	2888320.578
P20	88896.401	2888321.048
P21	88896.101	2888325.850
P22	88896.571	2888327.184

CONSULTING ENGINEERS
LIDWALA CONSULTING ENGINEERS (SA) (PTY) LTD
t: 081 123 4567 f: 081 123 4568
e: info@lidwala.com
w: www.lidwala.com

Lidwala

Offices: Botswana, Mozambique, Namibia, South Africa, Tanzania, Zambia, Zimbabwe

CLIENT
JOHANNESBURG WATER
1 MAIN STREET
SWISS HOUSE

DESIGNED	M.MURIGO	SEPTEMBER 2021
DRAWN	G.M	SEPTEMBER 2021
CHECKED	M.MURIGO	SEPTEMBER 2021
APPROVED BY:	SIGNATURE T.KLEYNHANS	DATE SEPTEMBER 2021
ECSA REG. No.	20110139	
CHECKED BY:		
	SIGNATURE	DATE



17 HARRISON STREET
MARSHALLTOWN
2107

TEL: (011) 688-1400
FAX: (011) 688-1529



REPLACEMENT OF JOHANNESBURG WATER
600mm Ø STEEL PIPELINE FROM LINBRO PARK
RESERVOIR TO BHEKILANGA PRV STATION IN
ALEXANDRA

BHEKILANGA PRV CHAMBER - PALISADE FENCE

SURVEY INFORMATION		APPROVAL BY JW DEPOT		SCALE	REV.	AMENDMENTS		DATE:	DRAWING No. JW14090R-AL-DET15-W
PROJECT SURVEYOR:		CHECKED				DESCRIPTION			
DATE:		APPROVED BY:			00	ISSUED FOR TENDER		MARCH 2023	
		SIGNATURE							
		DATE							
CCTV INFORMATION		APPROVAL BY JW PLANNING		SCALE	REV.	AMENDMENTS		DATE:	DRAWING No. JW14090R-AL-DET15-W
CCTV COMPANY:		CHECKED				DESCRIPTION			
DATE:		APPROVED BY:							
		SIGNATURE							
		DATE							

JW14090R-AL	DET15	-	01
PROJECT No.	DRAWING No.		REV.
A1	SHEET	1	OF 1
ORIGINAL PAGE SIZE			
FILE No.			